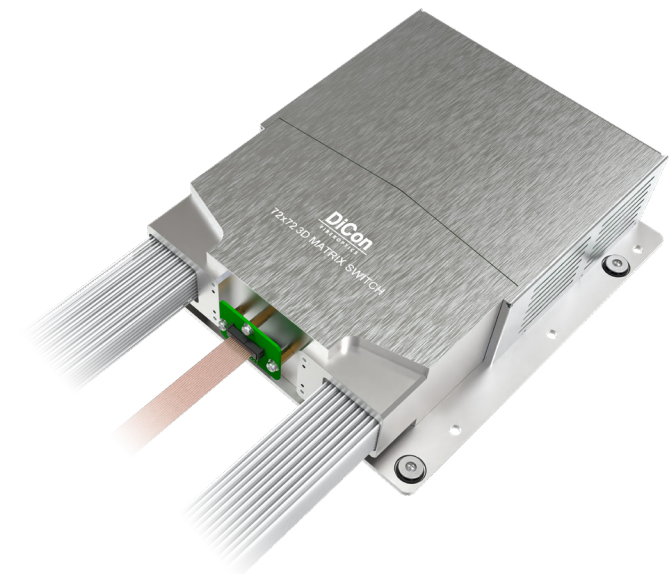


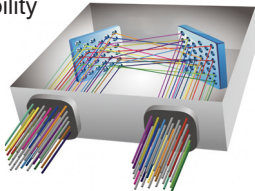
MEMS 72X72 OPTICAL MATRIX SWITCH MODULE

SX3 Model, Polarization Maintaining Fiber, Standard Grade



MEMS Optical Matrix Switch Module is built with DiCon’s proprietary MEMS technology. Each module contains 2 sets of MEMS mirrors for making 1-to-1 connections between input and output ports. The MEMS mirrors are held in position using precisely calibrated voltages and require no feedback control. This unique quality enables the switch to maintain stable connections and allows the device to function when there is no light in the fiber. This innovative platform has an outstanding track record and delivers best-in-class optical performance

- Proven MEMS technology
- Lifetime > 10⁹ switch cycles
- No dithering or active alignment artifacts
- Switches and holds dark fiber connections
- Low insertion loss with excellent stability
- Compact and lightweight
- Asymmetric MxN available



About DiCon

- Headquartered in California since 1986
- US based in-house MEMS fab
- Over 3 million MEMS mirrors produced since 1999
- Manufactures TAA compliant products

ORDERING INFORMATION

SX3 - T - - - - -

Grade

TStandard

Switch Configuration

72x7272x72

MxNM≤72, N≤72

Fiber Type

PM13Corning PM 1310 Fiber

PM15Corning PM 1550 Fiber

*Other fiber options available upon request

Test Wavelength

O1310 nm

C1550 nm

L1590 nm

*Use "/" to add multiple wavelengths. E.g., O/C or O/C/L

Fiber Jacket

L900 μm Loose Tube Fiber

B250 μm Bare Fiber

*Other fiber options available upon request

Connector Type

NNone

FCFC/UPC

FC/APCFC/APC

*Other connector types available upon request

Connector Key Orientation

NNone

SSlow Axis

FFast Axis

Pigtail Length

11 Meter

XSpecify X Meters

*Tolerance is +/- 0.1 m

MEMS 72X72 OPTICAL MATRIX SWITCH MODULE

SX3 Model, Polarization Maintaining Fiber, Standard Grade

OPTICAL SPECIFICATIONS¹

Operating Wavelength	1260 to 1675 nm
Insertion Loss ²	< 1.2 dB
Loss Repeatability ³	+/- 0.03 dB
Connection Stability ^{4,5}	+/- 0.03 dB
Polarization Extinction Ratio (PER) ⁶	> 18 dB
WDL ^{5,7}	< 0.3 dB
Crosstalk ⁵	< -60 dB
Back Reflection	< -50 dB
Optical Transition Time ^{5,8}	< 25 ms
Switch Lifetime	> 1 Billion Cycles
Input Power Range	Dark to +27 dBm

- 1. Measured separately for each Test Wavelength at room temperature
- 2. Measured with 3-jumper method or equivalent. See TIA/EIA 526-7
- 3. Over 100 cycles
- 4. 1 Hz sampling rate for 15 min
- 5. Met by design, not measured
- 6. PER with connectors is 18 dB typical, 16 dB minimum
- 7. WDL is defined within Test Wavelength ±20 nm
- 8. Optical transition time for all ports switching concurrently, not including command processing overhead

ELECTRICAL SPECIFICATIONS

Module Power Consumption	19 W max. Operating 24 W max. Start Up
Supply Voltage	12V DC
Module Interface	16-Pin Samtec
Module Control	USB, RS232, I ² C

ENVIRONMENTAL SPECIFICATIONS

Operating Temperature	0 to 50°C, < 85% RH
Storage Temperature	-40 to 70°C, < 40% RH

MECHANICAL SPECIFICATIONS

Module Size	230 mm x 210 mm x 59.7 mm
Module Weight (with fibers)	3.3 kg

